

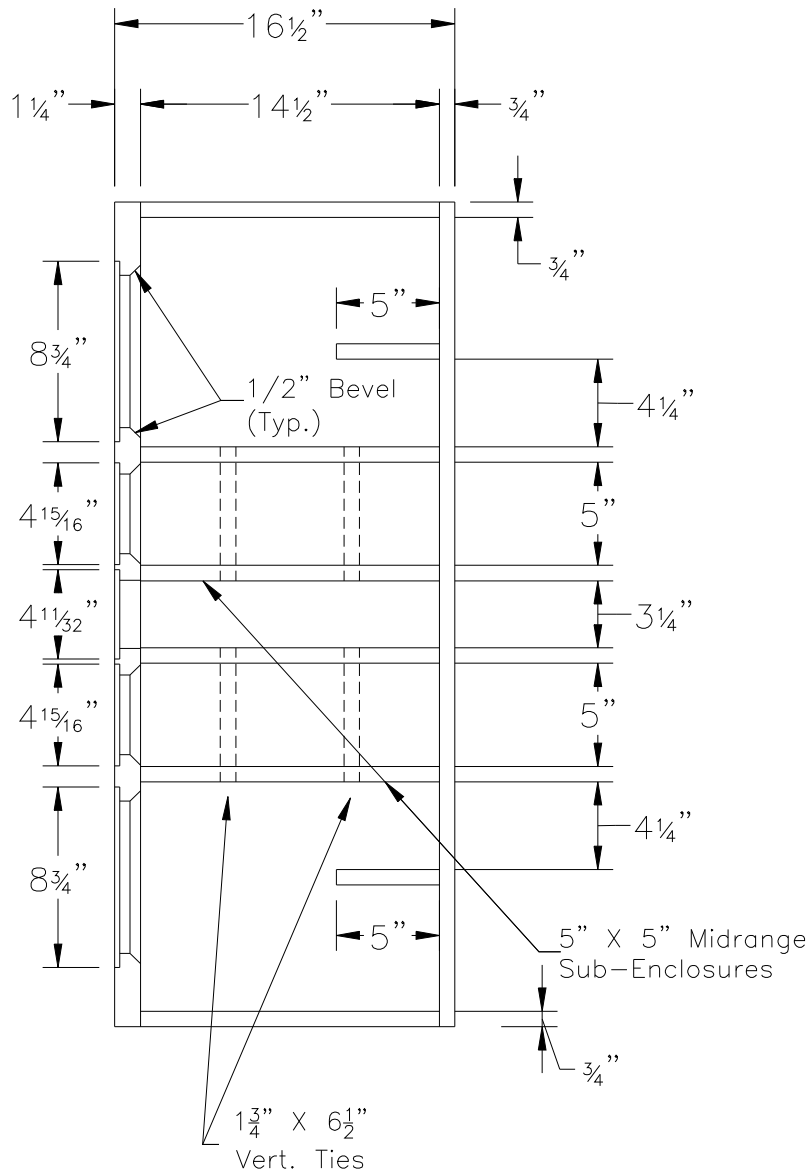
Front View

Drawn By:  
 Brian Walter / ARM  
 DATE: Jan 24, 2008

Design By: Jim Holtz  
 Crossover By: Curt Campbell

TITLE: SEALED STATEMENTS  
 Front View

SHEET:  
 1  
 OF:  
 5



Section A-A

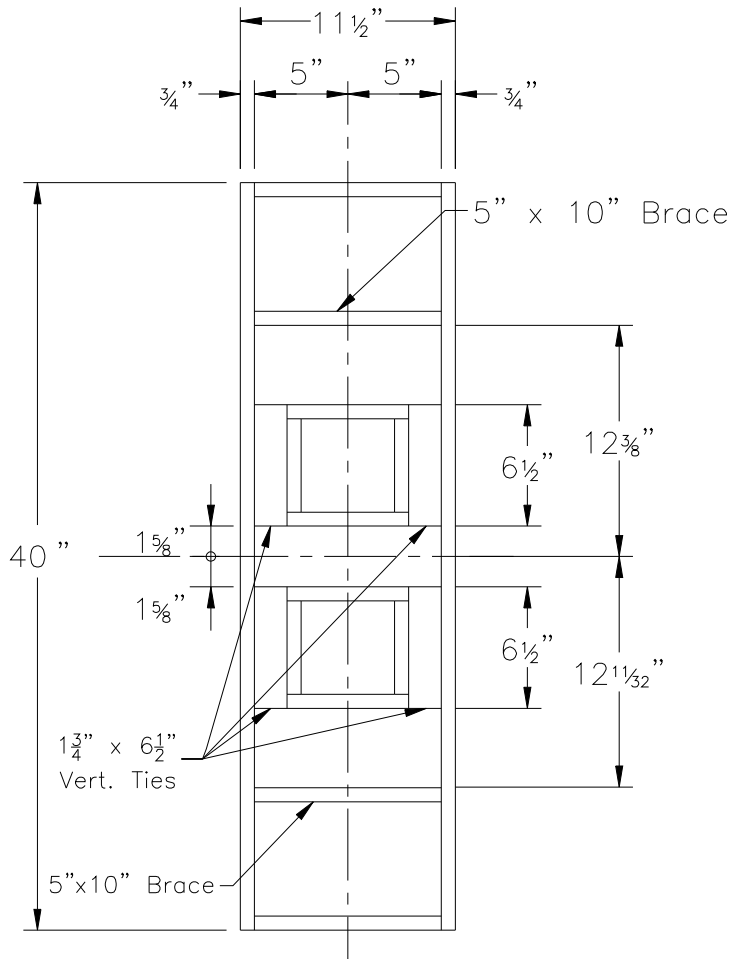
\* Front baffle is constructed using one layer of 3/4" MDF and one layer of 1/2" MDF.

Drawn By:  
Brian Walter / ARM  
DATE: Jan 24, 2008

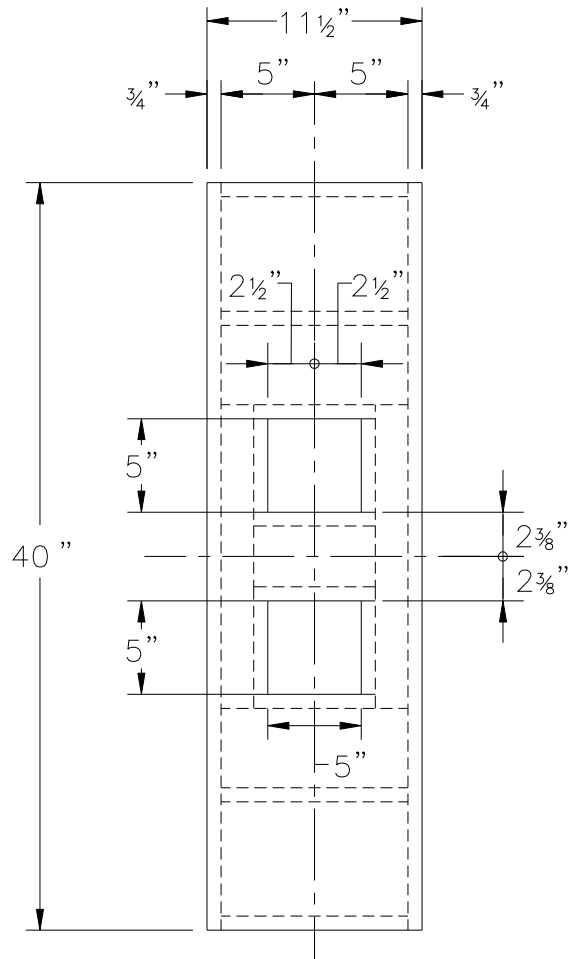
Design By: Jim Holtz  
Crossover By: Curt Campbell

TITLE: SEALED STATEMENTS  
Side View

SHEET:  
2  
OF:  
5



Rear View  
(Back Removed)



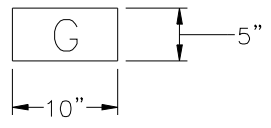
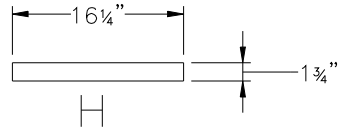
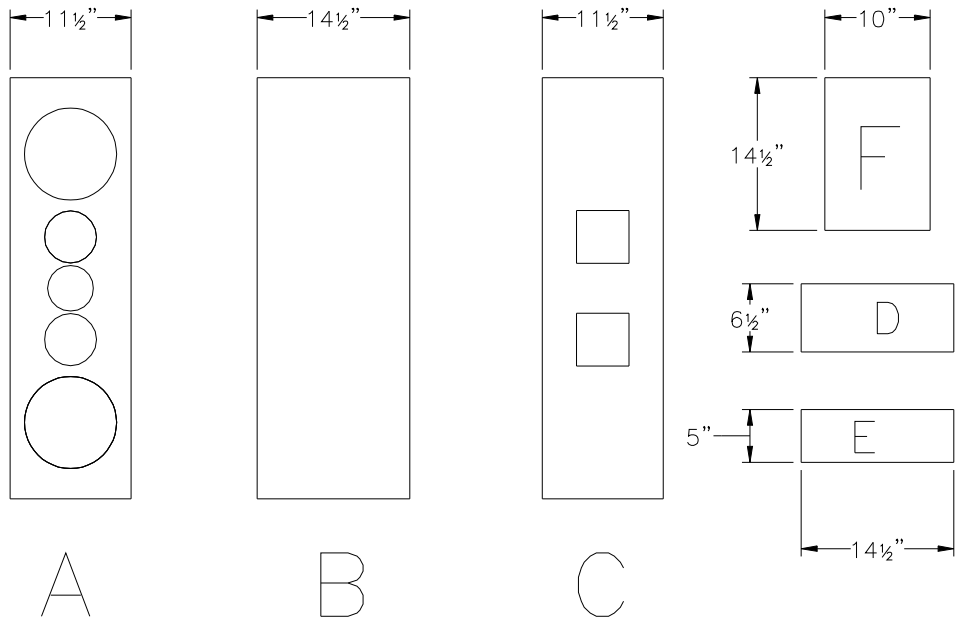
Rear View

Drawn By:  
Brian Walter / ARM  
DATE: Jan 24, 2008

Design By: Jim Holtz  
Crossover By: Curt Campbell

TITLE: SEALED STATEMENTS  
Rear Views

SHEET:  
3  
OF:  
5



\* Cut holes in "E" & "G" as req'd for port tube and flared end used.

Cut List		Finished Sizes			
Part	Description	Thickness	Width	Length	Quantity
A	Front Baffle (3/4" + 1/2")	1 1/4"	11 1/2"	40"	2
B	Side	3/4"	14 1/2"	40"	4
C	Back	3/4"	11 1/2"	40"	2
D	Pass-Thru Top & Bttm	3/4"	6 1/2"	14 1/2"	8
E	Pass-Thru Sides	3/4"	5"	14 1/2"	8
F	Top / Bottom	3/4"	10"	14 1/2"	4
G	Horz. Back Brace	3/4"	5"	10"	4
H	Vert. Side Brace	3/4"	1 3/4"	16 1/4"	8

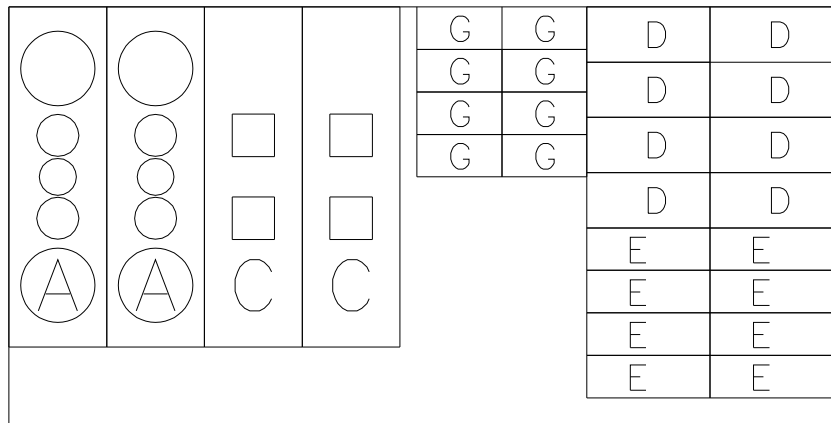
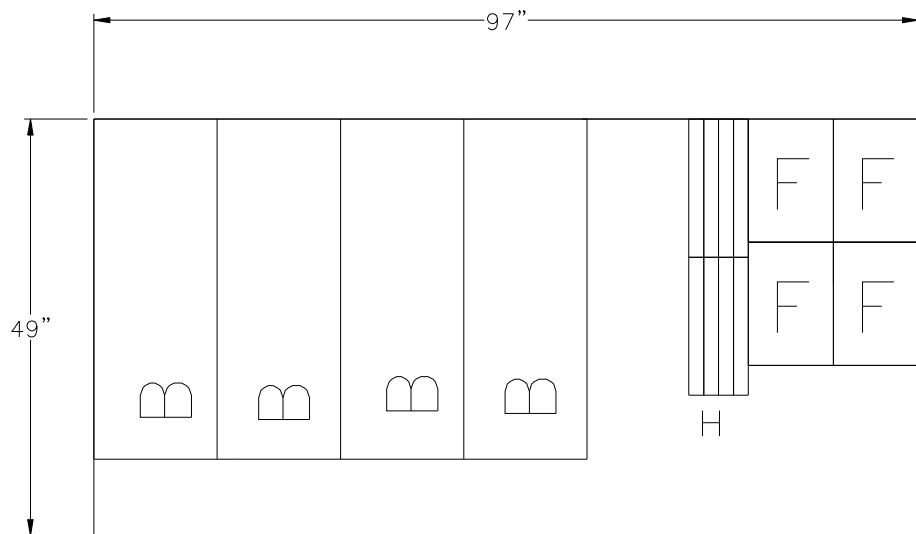
Note: Cut baffle and back about 1/2" oversize; trim with flush trim bit after installed.

Drawn By:  
Brian Walter / ARM  
DATE: Jan 24, 2008

Design By: Jim Holtz  
Crossover By: Curt Campbell

TITLE: SEALED STATEMENTS  
Cut List

SHEET:  
4  
OF:  
5



1 - 49" x 97" sheet of 1/2" MDF is required to make 2 additional baffle pieces (A) to produce the 1-1/4" thick baffle.

Drawn By:  
Brian Walter / ARM  
DATE: Jan 24, 2008

Design By: Jim Holtz  
Crossover By: Curt Campbell

TITLE: SEALED STATEMENTS  
Cut Diagram

SHEET:  
5  
OF:  
5